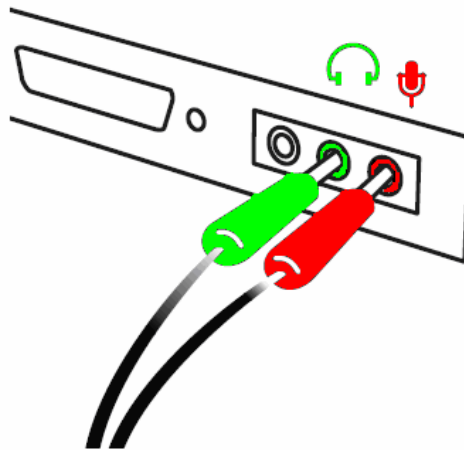


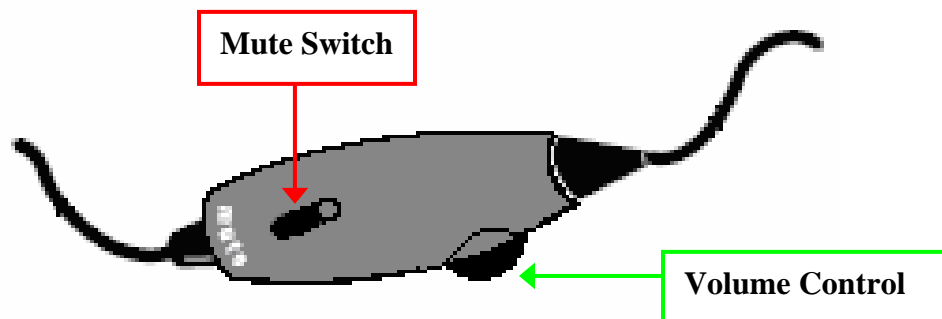
Installing Your Headset:

1. To begin start by locating your sound card inputs on the back of your computer. (Some Laptops have the inputs on the side or front)
2. Find the inputs for your Microphone, and Sound. **The microphone input is usually red in color, and your sound input is usually green in color. But you must check your own computer.**
3. Insert the plugs from the headset into the color corresponding jacks, as displayed below:

Plug into Soundcard



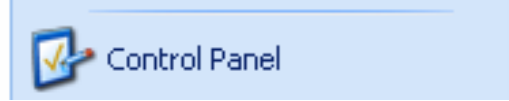
4. One final thing to check is your headset control. You should make sure of two things:
 - A. The “Mute Switch” is not set to mute.
 - B. Your “Volume Control” is set to max volume.



Some computers have audio jacks in front and in back of the computer.

Check Your Audio Settings:

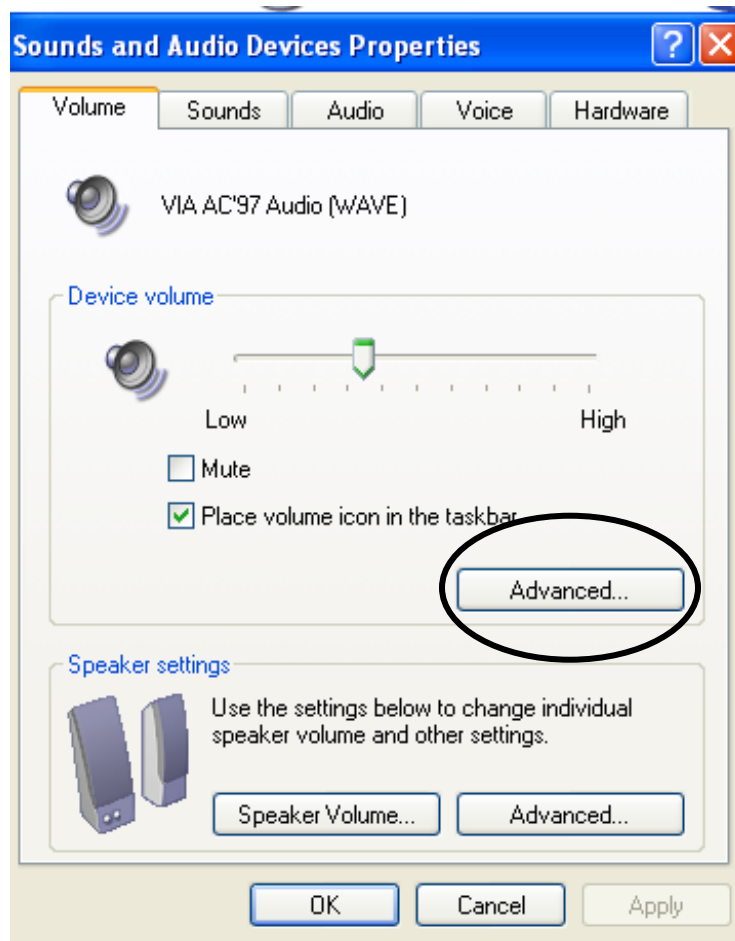
1. Begin by selecting the “**Start**” button” and then choosing “**Control Panel**”



2. From the control Panel choose “Sound and Audio Devices”

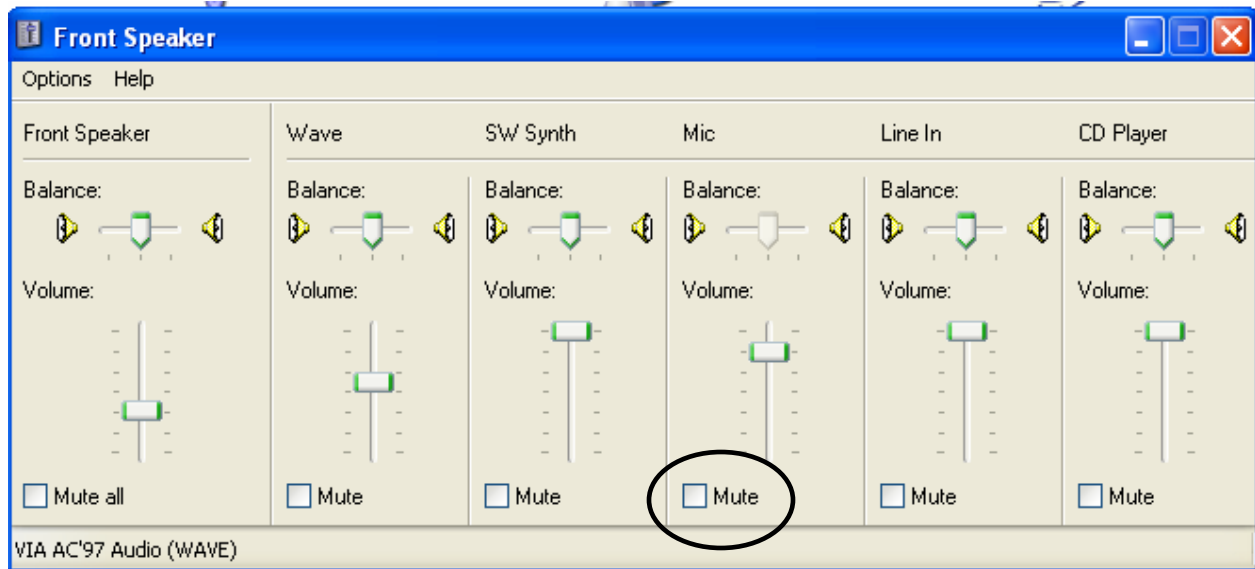


3. You should now see this screen:



4. In the above, circled, you want to select “Advanced”

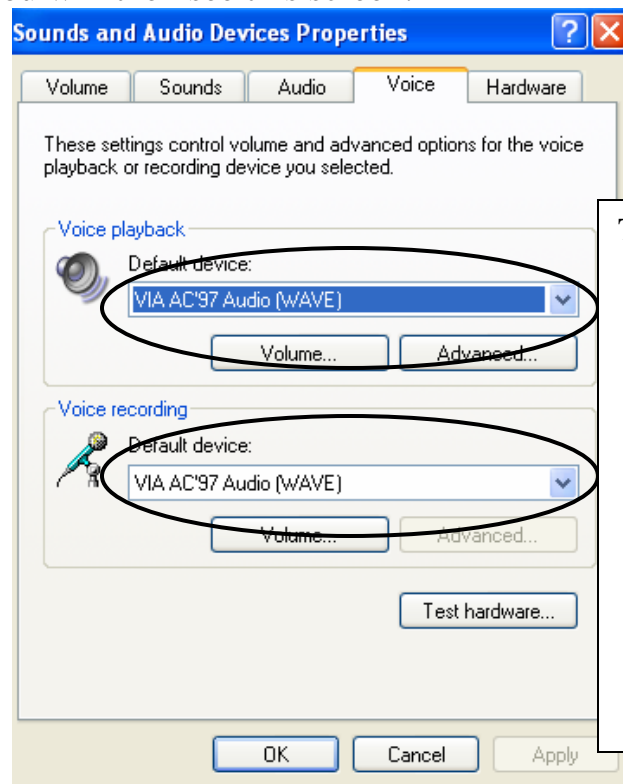
5. You now see a screen similar to this:



6. In the above make sure that under “Mic” the box next to Mute, **is not checked**.

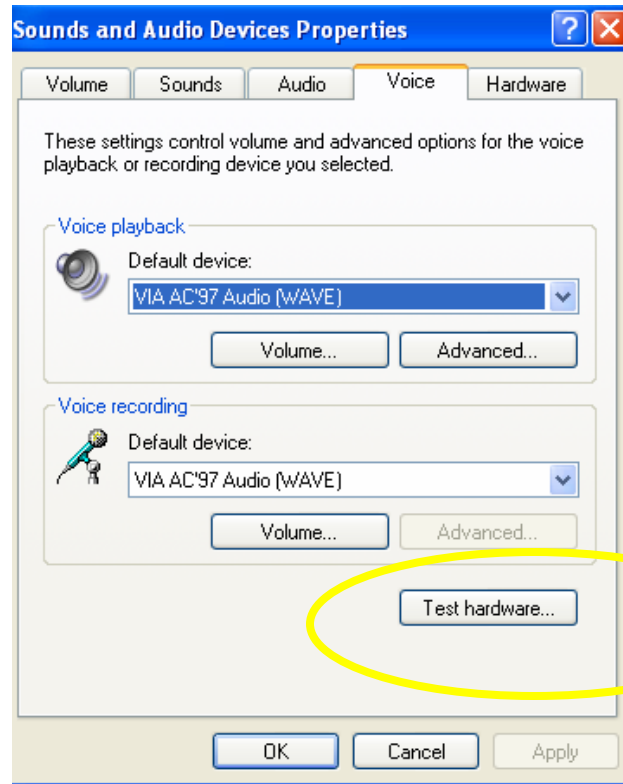
- Also make sure that no other Mute boxes are checked.

7. Next refer to step 3, and its photo, you want to select “Voice” from the tabs across the top. You will then see this screen:

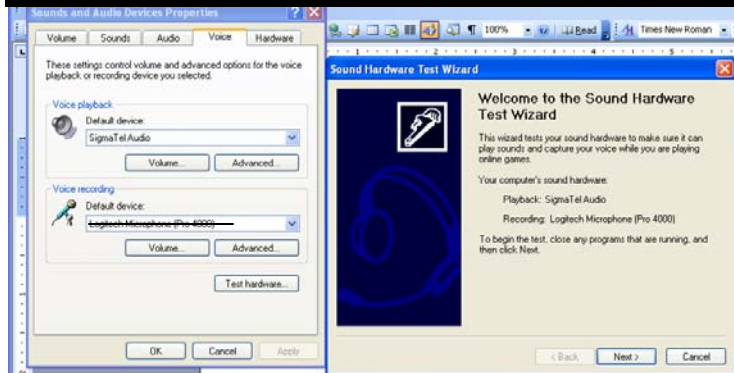


The name of the “default device” sound card will vary with every computer. You may have more than one choice for recording device. **It cannot be your Logitech camera.**

Test Your Hardware.



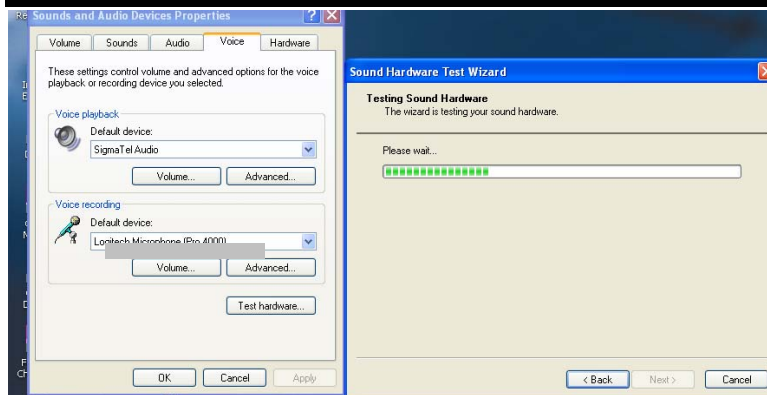
1.



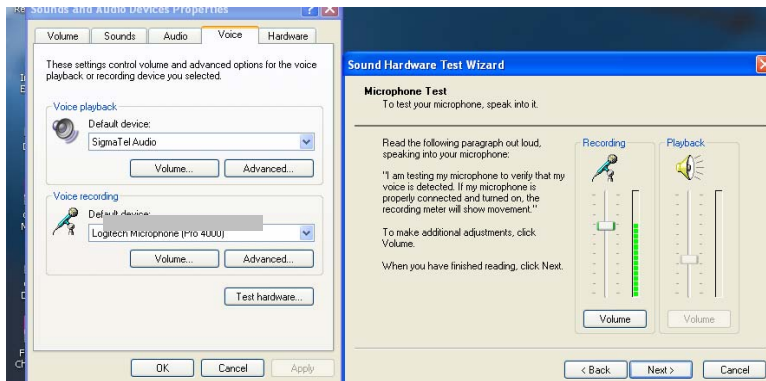
This is a Windows system check.

If your headset works hear, it will work in your InterLangua conference.

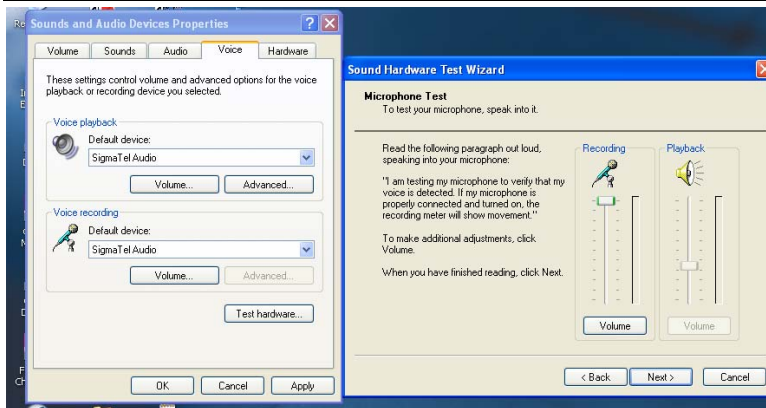
2.



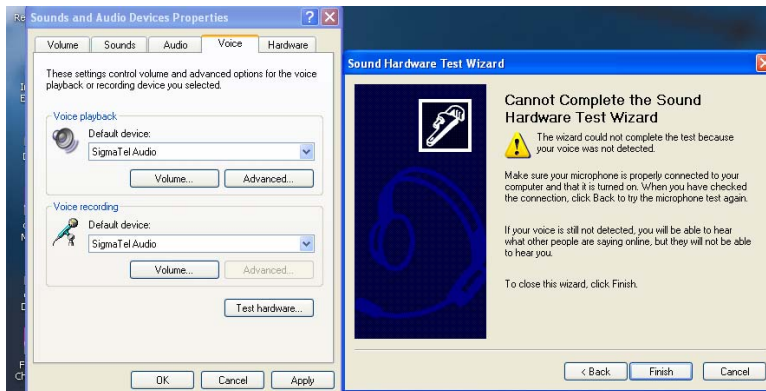
Windows system is checking your microphone hardware.



Speak into your microphone. You will see the left bar in **GREEN** move up and down if you headset is plugged in correctly.



If your microphone is not connected properly. You will see the left bar like this. You must then find the correct way to connect your headset.



Windows will not complete the setup unless you headset is connected..